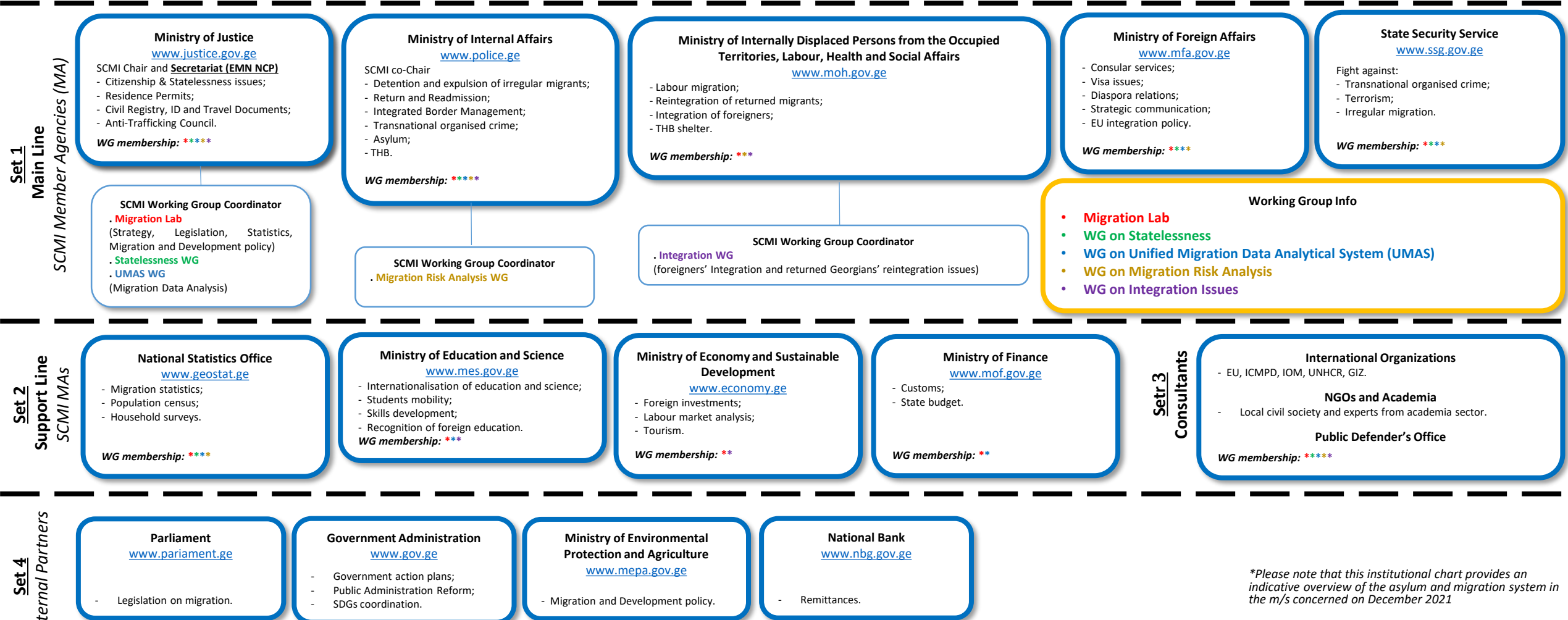


State Commission on Migration Issues

www.migration.commission.ge

The **State Commission on Migration Issues** (SCMI/Commission) is the government's advisory body, which consists of three incorporated sets of organizations closely cooperating with the fourth external set (see below). The decisions within the Commission are made at a ministerial/deputy ministerial level, while preparatory work is run on medium (Dep. Director / Head of Unit) level. The medium level representatives work is based on shared responsibilities and concentrated within 5 thematic working groups (WG). SCMI's analytical, advisory and administrative support is provided by its **Secretariat**, which at the same time is the **EMN's NCP**.



**Please note that this institutional chart provides an indicative overview of the asylum and migration system in the m/s concerned on December 2021*